



*Université  
de Lomé*

**CENTRE D'EXCELLENCE REGIONAL POUR  
LA MAITRISE DE L'ELECTRICITE (CERME)**



**PHOTOS DE RECEPTION ET D'INSTALLATION DE SERVEUR ET DE  
FORMATION DU PERSONNEL**



**SPARK 30C**

- 27mm f/1.6 1/33s ISO1802

# HPE ProLiant

(C) Copyright 1982-2025 Hewlett Packard Enterprise  
HPE ProLiant DL560 Gen10  
System ROM Version: U34 v3.40 (01/16/2025)  
Serial Number: C223290H26

Installed System Memory: 512 GB, Available System Memory: 512 GB

4 Processor(s) detected, 96 total cores enabled, Hyper-Threading disabled  
Proc 1: Intel(R) Xeon(R) Platinum 8268 CPU @ 2.90GHz  
Proc 2: Intel(R) Xeon(R) Platinum 8268 CPU @ 2.90GHz  
Proc 3: Intel(R) Xeon(R) Platinum 8268 CPU @ 2.90GHz  
Proc 4: Intel(R) Xeon(R) Platinum 8268 CPU @ 2.90GHz  
UPI Speed: 10.4 GT/s

Workload Profile: General Power Efficient Compute  
Power Regulator Mode: Dynamic Power Savings  
Advanced Memory Protection Mode: Fast Fault Tolerant Memory Protection  
Boot Mode: UEFI  
HPE SmartMemory authenticated in all populated DIMM slots

Starting required devices. Please wait, this may take a few minutes.  
System configuration has changed. Starting all devices.

iLO 5 IPv4: Not available  
iLO 5 IPv6: 0000::0000:0000:0000:0000

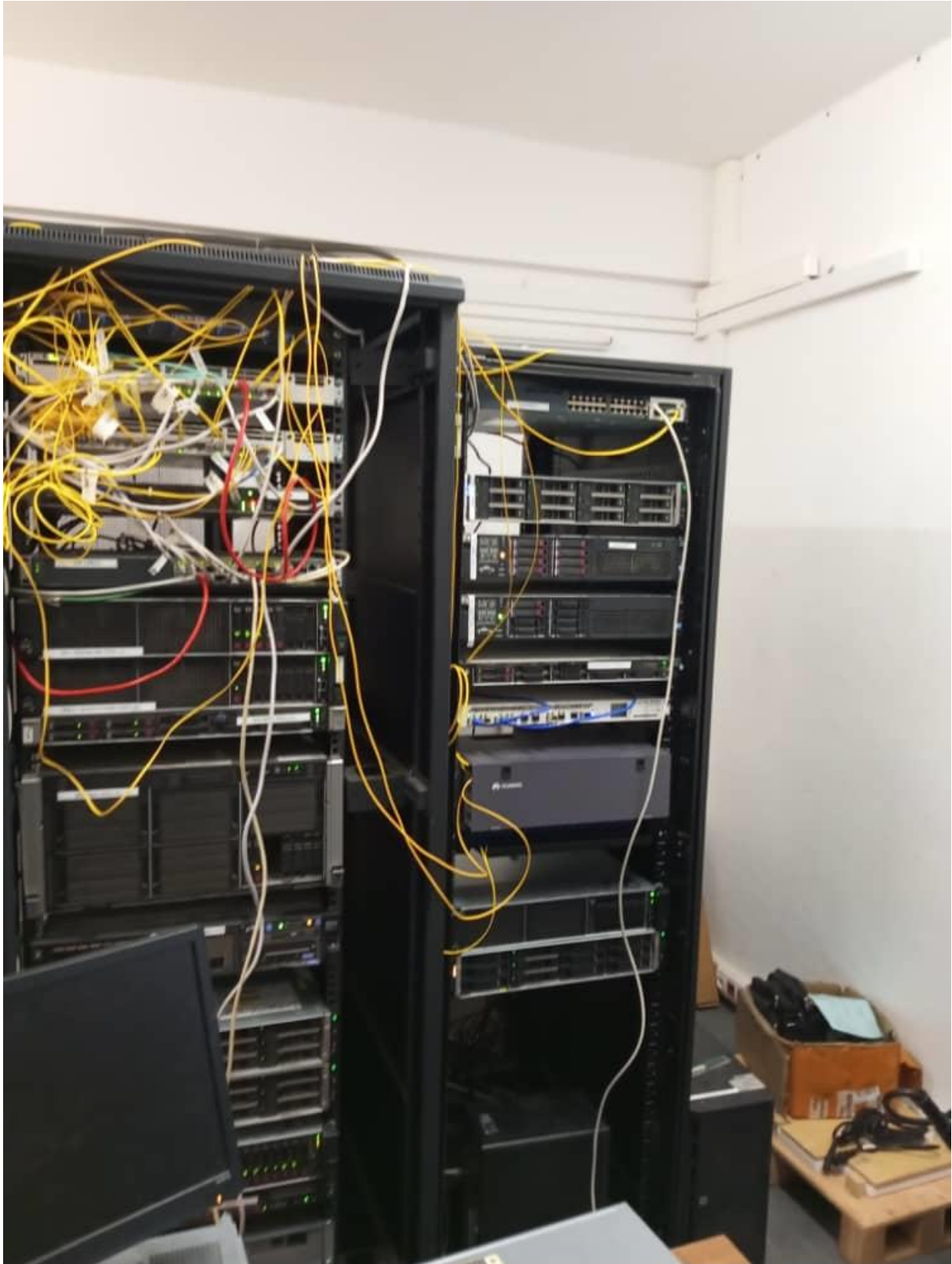
**F9** System Utilities      **F10** Intelligent Provisioning



**SPARK 30C**

• 27mm f/1.6 1/33s ISO1802





SPARK 30C

• 27mm f/1.6 1/33s ISO2571



SPARK 30C

- 27mm f/1.6 1/25s ISO3607



SPARK 30C

• 27mm f/1.6 1/50s ISO841



