



SPARK 30C

• 27mm f/1.6 1/33s ISO1802

HPE ProLiant

(C) Copyright 1982-2025 Hewlett Packard Enterprise
HPE ProLiant DL560 Gen10
System ROM Version: U34 v3.40 (01/16/2025)
Serial Number: C223290H26

Installed System Memory: 512 GB, Available System Memory: 512 GB

4 Processor(s) detected, 96 total cores enabled, Hyper-Threading disabled
Proc 1: Intel(R) Xeon(R) Platinum 8268 CPU @ 2.90GHz
Proc 2: Intel(R) Xeon(R) Platinum 8268 CPU @ 2.90GHz
Proc 3: Intel(R) Xeon(R) Platinum 8268 CPU @ 2.90GHz
Proc 4: Intel(R) Xeon(R) Platinum 8268 CPU @ 2.90GHz
UPI Speed: 10.4 GT/s

Workload Profile: General Power Efficient Compute
Power Regulator Mode: Dynamic Power Savings
Advanced Memory Protection Mode: Fast Fault Tolerant Memory Protection
Boot Mode: UEFI
HPE SmartMemory authenticated in all populated DIMM slots

Starting required devices. Please wait, this may take a few minutes.
System configuration has changed. Starting all devices.

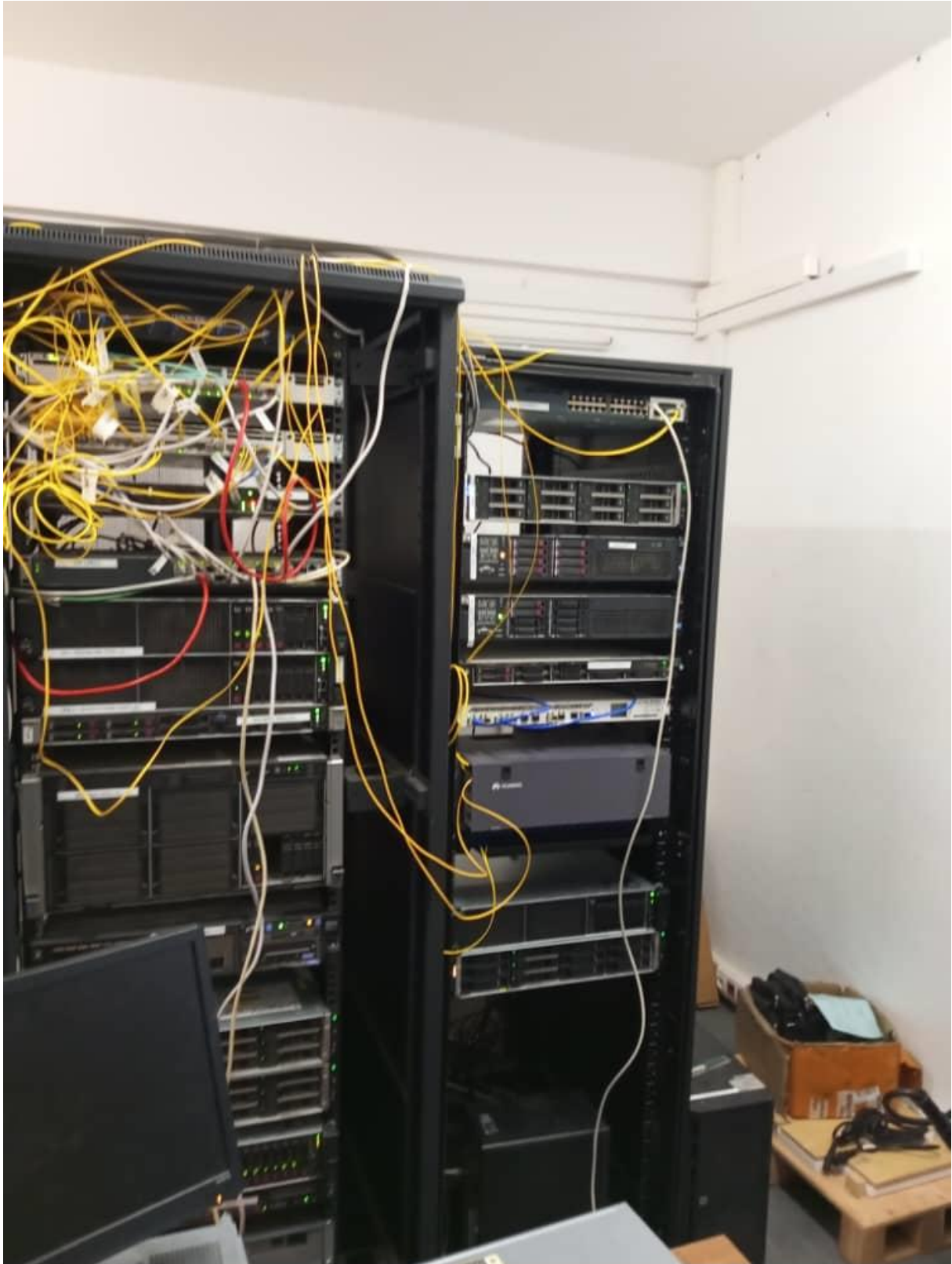
iLO 5 IPv4: Not available
iLO 5 IPv6: 0000::0000:0000:0000:0000

F9 System Utilities **F10** Intelligent Provisioning



SPARK 30C

- 27mm f/1.6 1/33s ISO1802



SPARK 30C

• 27mm f/1.6 1/33s ISO2571



SPARK 30C

- 27mm f/1.6 1/25s ISO3607



SPARK 30C

• 27mm f/1.6 1/50s ISO841

